

March Newsletter 2016 Newsletter

Our Redeemer Lutheran Church

The Lutheran Church --- Missouri Synod

2701 College, Quincy, IL 62301-3558
Internet: www.OurRedeemerQuincy.org
E-mail: Secretary@OurRedeemerQuincy.org
Pastor's E-mail: Pastor@OurRedeemerQuincy.org

Fax: (217) 223-2392
Telephone: (217) 223-1769
Eden Household: (217) 224-3929

To the people of God at Our Redeemer,

The month of March is full of activity and opportunity to worship and serve our Lord. It is also a time to see a full accounting of what it is that our Lord has done for us. He is the Lamb of God who willingly went to the altar of the cross to be the final sacrifice for the guilt of our sin. He is the Son of God who conquered death and is the first fruits of the resurrection.

There is nothing more important than for you to personally believe this good news – no one can believe it for you. But simply having a personal faith is not what being a Christian is all about. God works through means. He comes to you through His Word and Sacrament. His grace and the forgiveness of sins is found and received within the gathering of the community of believers.

By definition, you cannot be a part of the “Church” if you are not among those who gather with the people of God. The word “Church” comes from the Greek word “ecclesia” which refers to a group of individuals gathered together for some function. The Christians borrowed this term out of regular society because this is what Christians do. We are individuals who make up the “body of Christ” who gather together.

We gather to hear and receive the Means of Grace. We gather together so that we can be of help and service to one another, or so that we can receive help and service from another. Life in Christ's Church not only gives us the opportunity to hear and receive the message of forgiveness, life, and salvation from God Himself and how He carried our burdens for us to the cross and grave, but it gives us an opportunity to bear the burdens of others. God's people find joy in being helpful and working in service of others. Likewise, God's people who are in need should not see themselves as a burden, but rather see themselves as providing an opportunity for others to do good.

Stewardship within Christ's Church comes in many forms. Paul says, “⁶Having gifts that differ according to the grace given to us, let us use them: if prophecy, in proportion to our faith; ⁷if service, in our serving; the one who teaches, in his teaching; ⁸the one who exhorts, in his exhortation; the one who contributes, in generosity; the one who leads, with zeal; the one who does acts of mercy, with cheerfulness. ⁹Let love be genuine. Abhor what is evil; hold fast to what is good. ¹⁰Love one another with brotherly affection. Outdo one another in showing honor. ¹¹Do not be slothful in zeal, be fervent in spirit, serve the Lord. ¹²Rejoice in hope, be patient in tribulation, be constant in prayer. ¹³Contribute to the needs of the saints and seek to show hospitality (Rom. 12:6-13).

Stewardship is simply caring for and faithfully using the talents and treasures we have in this life which are not our own. All that we have in this life comes from God and belongs to God. He allows us to use this for the length of our days, for our good and the good of our neighbor.

It has been exciting to see the number of active volunteers involved in singing, in teaching, in helping those less fortunate, visiting the elderly, etc. increase over the past few years. The love of our church is genuine. The financial generosity of our church members allows the Gospel ministry to keep moving forward through our local mission to the people of Quincy, to the children of St. James School, and even still we are able to fund numerous missions around the world. God has richly blessed us.

The year 2015 was a very busy year in the life of our congregation. We completed many big projects like a new roof, new air conditioning units, new chancel lights, new window glazing, etc. Thankfully, through generous giving over the years, we have been blessed with the ability to maintain our building and grounds without asking for extra contributions. In addition to our additional spending, we also had a budget deficit of \$52,446. Again, thankfully, through generous contributions in the past, we were able to pay our bills and fund our mission projects without asking for extra contributions.

However, in the year 2015, our reserve capital shrank from \$406,957.91 to \$228,342.31. We obviously cannot have \$50,000 deficits for too many years without an increase in giving or a decrease in our programs.

The circumstance is not as dire as it appears. Our shortfall for the year was about \$1000 per week and we will be discussing this more in the months ahead. I would hope that, after almost seven years as your pastor, you have come to realize that I generally speak very little about money and keep my focus on Christ and the full accounting of what He has done.

Yet, it is important at this time to have a conversation about this before the situation gets critical because I do not want to see us reducing our mission outreach or the support for St. James. I am overjoyed to be the pastor of a congregation which is so mission-minded and has a long history of giving back to God the first fruits of what He has given. Our 75+ years of faithful mission and stewardship has brought us to be a wonderful gathering of baptized and redeemed individuals who continue to gather together around God's Word and Christ's body and blood. Keep our church in your prayers as continue to look for opportunities to share the full accounting of Christ with those who do not know our joy.

In Christ,
Pastor Eden

March Puzzle Page Answer (puzzle found on page 13)

If it be possible, as much as lieth in you, live peaceably with all men. Romans. 12:18

Who's Who at Our Redeemer

President	Chet Vahle (2 nd term)	Oct. 2015 – Sept. 2016
Vice-President	Jeff Wolfmeyer (2 nd term)	Oct. 2015 – Sept. 2016
Secretary	Wanda Spohr (2 nd term)	Oct. 2015 – Sept. 2016
Treasurer	Donna Haire (1 st term)	Oct. 2015 – Sept. 2016
Financial Secretary	Evelyn McDowell (1 st term)	Oct. 2015 – Sept. 2016
Education Board	Melissa Knapp, S.S. Supt., ex officio	Appointed
	Gretchen Wolfmeyer (2 nd term)	Oct. 2015 – Sept. 2017
	Randy Wolfmeyer (1 st term)	Oct. 2014 – Sept. 2016
	Ryan Vaughn (1 st term)	Oct. 2014 – Sept. 2016
Board of Elders	Larry Foster (1 st term)	Oct. 2015 – Sept. 2017
	Darryl Drescher (1 st term)	Oct. 2015 – Sept. 2017
	Brad Essington (1 st term)	Oct. 2014 – Sept. 2016
	Stan Yelton (2 nd term)	Oct. 2014 – Sept. 2016
	Steve Schoch (1 st term)	Oct. 2015 – Sept. 2016
	VOLUNTEER NEEDED	
Evangelism Board	Michele Clevenger (1 st term)	Oct. 2015 – Sept. 2017
	Ruth Ann Snowden (1 st term)	Oct. 2015 – Sept. 2017
Property Board	Jeff Smith (2 nd term)	Oct. 2015 – Sept. 2017
	Steve Kaiser (1 st term)	Oct. 2015 – Sept. 2016
Stewardship Board	Larry Ehmen (2 nd term)	Oct. 2015 – Sept. 2017
	David Pellman (1 st term)	Oct. 2014 – Sept. 2016
Youth Ministry Board	VOLUNTEERS NEEDED	

The Widow's Mite---

Jesus sat down opposite the place where the offerings were put and watched the crowd putting their money into the temple treasury. Many rich people threw in large amounts. But a poor widow came and put in two very small copper coins, worth only a fraction of a penny. Calling his disciples to him, Jesus said, "I tell you the truth, this poor widow has put more into the treasury than all the others. They all gave out of their wealth, but she, out of her poverty, put in everything - all she had to live on".

Mark 12:41-43 ESV

March 2016

UPCOMING...

March 3rd...Monthly mtg, 6:30 pm

March 16th...Advent Dessert Host

April 7th... Monthly mtg., 6:30 pm

Apr. 22nd & 23rd...CID District Convention, Jacksonville

April 30th...Quincy Zone Servant Event, 9:30 – 11:30, watch for details!



Feb. meeting highlights –
We are so excited to announce our support this year of these local missions...Camp Callahan, Quincy Teen Reach, St. John's Food Pantry and OAFIC! Worldwide missions we will be supporting are LWR & Human Care, Orphan Grain Train, the Comfort Dog Ministries and Lutheran Hour Ministries!

Feb. event highlights –
The highlight of our month was our Soup and Bread fundraiser! Because of your support and the help of Thrivent Action Team \$ we were able to raise well over \$500! Thank You!

Thinking you might like to be a part of the mission of LWML??? You are invited to check us out at one of our upcoming meetings or events!

We welcome you to join us in "Serving the Lord with Gladness" with your many gifts, talents and resources!

Lutheran Women in Mission



We are committed to helping LWML make an impact on the next generation.

We are dedicated to sharing our hearts for Jesus Christ, caring for our sisters in our community and congregation, and helping them use their gifts to serve the Lord.

We are glad to be a part of LWML, and this year we will invite the women in our lives to consider learning more about LWML with us.

Please contact any LWML member or Colleen Westberg at 217-224-7881 to learn more or go to www.lwml.org to read about the mission and great history of the LWML!

National Mission Grant Bulletin Bytes

LWML has donated over \$100 million since 1942!!!

OUTREACH IN REFUGEE CAMPS – LEBANON...\$72,000

Supported by a mission grant from the LWML, the Middle East Lutheran Ministry (MELM) is able to provide the many displaced people in Lebanon facing extreme religious violence, displacement and rejection with humanitarian supplies. This program also enables the team to share the faith and true love of Jesus Christ at a time of desperate need and hopelessness, by giving them a strong Christian presence as the gospel is being shared with them.

For more information on this, and other 2015-2017 Mission Grants go to www.lwml.org. For more information on this, and other 2015-2017 Mission Grants go to www.lwml.org.

Remembering In Our Prayers



REMEMBER IN PRAYER THOSE IN OUR NATION'S MILITARY SERVICES:

Mark and Kari Adams, Mark Borg, Paul Boriack, Steve Clark, Aaron DeWerff, Michael Goodwin, Robert Goodwin, John Haines, Zach Howerton, Ryan Keller, Jason Klauser, Levi Meyer, Jeremy Schwartz, Aaron Schmitt, Ryan Thruston, Andy Tipton, Marc Troxel, Brandon VanBastian, and Charles Wheeler.

REMEMBER IN PRAYER THOSE WITH ONGOING HEALTH NEEDS:

Nick Austin, Carolyn Bruemmer, Sutton Perry-Brockemeier, Sean Burner, Richard Grathwohl, Lynda Hinkamper, Lisa Howerton, Elaine Hyer, Kim Long, Meghan Meyer, Michael Morgan, Nancy Ott, Michelle Reinberg-Page, David Rickey, Cole Schullian, Kory Tournear, Jacob Weimer, Vicki Wemhoener, Jackson Wepler.



REMEMBER OUR SHUT-IN MEMBERS AND FRIENDS:

Elizabeth Barton, Carolyn Bruemmer, Ralph Genenbacher, Mary Hurley, Cleada Mason, Marilyn Newman, Nancy Ott, Anna Mae Parsons, Don Sass, LaVora Scoggan, Joyce Southward, Ida Utterback, Robert Wemhoener, Lucille Wiskirchen.

Keep Our Missionaries in Your Prayers

Apple of His Eye Mission Society

The Evangelical Lutheran Church in Latvia

The Lutheran Church of the Redeemer, Harlow, Essex, U.K.

The Independent Evangelical Lutheran Church in Germany

Mrs. Alvina Federwitz in Liberia, West Africa

Jonathan and Carrie Federwitz and their children in Papua New Guinea

Danny and Becca DeLoach and their children, 8001 Hope Lane, Waxhaw, NC 28173

Mrs. Julie Lutz, home on furlough

Rev. Peter Kolb in Sri Lanka

Our Seminary Students



Concordia Theological Seminary, Saint Louis, MO:

Chris Troxel, 12 Founders Way Unit D, Saint Louis, MO 63105



Concordia Theological Seminary, Saint Louis, MO:

Jeremiah Jording, 10 Founders Way, Apt A, Saint Louis, MO 63105

Our Mission

To the glory of God we are SHARING Our Redeemer by ...

CARING for one another in Christian love and compassion

ENCOURAGING growth and outreach through worship and Bible study

Sunday School Staff

Superintendent – Melissa Knapp

Pre-school – Gina Eickelschulte, Jessica Campbell

Kindergarten – Suzanne Troxel

Grades 1 & 2 – Monica Foster

Grades 3 & 4 – Sandy Callahan

Grades 5 & 6 - Donna Haire

Grades 7 & 8 – Karol Ehmen

High School – Gretchen Wolfmeyer

Upcoming Events

Beth Moore DVD Bible study each **Tuesday** at **9:30 AM** through **March 22nd**. Contact Linda Go at 257-1022 if interested.

New Member & Confirmands Carry-in Come on out March 13th and show your support for our Confirmands and New members to Our Redeemer! The Confirmand Questioning and New Member dinner is being held on **Sunday, March 13th**. The Questioning begins at **5:30 pm** in the sanctuary followed by a carry-in dinner in the fellowship hall. The church is providing the main dish with all attending the dinner to bring a potato/veggie/salad or dessert to share. Please find the sign-up sheet in the narthex to give us heads up on how many to plan for. Don't miss this all important day for the Confirmands and to meet and welcome your newest brothers and sisters in Christ!

The Greenmount Cemetery will have its Annual Clean-up of the grounds **March 14 -18**. We ask families to **remove all items by March 13** and not to replace them until March 19. (Shepherds' hooks/staffs may remain but nothing should be left on them.)

A Reminder – Thrivent members with Choice Dollars can now direct them from all of 2015. **Deadline is March 31st, 2016.** (4th quarter Thrivent Choice Dollars were not available until Jan. 2016.) "How to Direct" cards with the Thrivent information on the table by the stairs. Both online and phone instructions are given. Or, if you prefer, you can contact one of our local Thrivent representatives (Gretchen has their contact information) and they can take care of this for you.

Registration is Open for *Vocatio* Concordia Seminary, St. Louis is hosting their program for high school students (grades 9-12 for Fall 2016). The dates are **June 25-30, 2016**. This six-day program is designed to encourage and equip young men and women to consider their vocation as Christians. This event includes a Concordia University System college fair, presentations, servant event in Perry County, and more. <http://www.csl.edu/admissions/visit-us/visitation-events/vocatio/>

LWML Rummage Sale 2016 – Please save any and all items you no longer need for our rummage sale this year. All proceeds go to missions.

Save the Date: Tuesday, **Sept. 20th**. ORLC's LWML is hosting Quincy Zone Fall Rally this year.

Volunteer Opportunities

Youth Group Leader Needed Looking for a young man or young couple willing to lead our Youth Group. Please see Pastor or our Church President for more information.

Welcome Committee Needed Looking for friendly ORLC members to help follow up with new visitors and families that may need our help. Please contact Pastor Eden for more information.

American Heritage Girls Needs Volunteers for meetings 3 times a month to help with snacks, crafts, and working on badges. Please contact Tina Vaughn or Gretchen Wolfmeyer to help.

Thrivent Action Teams - If you are a Thrivent Financial member or have a Thrivent member in your group, you can apply for Thrivent funds to help with a fundraiser or to finance an event. You can lead a Thrivent Action Team to bring people together to coordinate an educational event, conduct a service activity, or organize a fundraiser for something you are passionate about. It's easy and fun! **Apply at least 21 days prior to your event at www.thrivent.com/actionteam.** Thrivent will provide resources to help you plan the event, promotional items- including t-shirts, and a debit card loaded with \$250 of seed money. For ideas or to learn more simply visit thrivent.com/actionteam or contact Mick Goslin at 314-452-0477. Several members in our area have led Action Teams this past year and this program has helped with their fundraisers; Benefit for a Family with medical expenses, Autism support group fundraiser, and Servant event expenses, etc. Think outside the box for ways that you and Thrivent can help your church, your school, and your community. You can apply for seed money for advertising (printing, posters, etc.), and for seed money for supplies for an auction (for example), and for seed money for food that will be served at an event.

ORLC History items will now be kept in file cabinets in the old chapel. If any members wish to donate history items, they can be stored there. Also in the future, any items of importance can be saved there for our 100 year anniversary.

We would like to thank the funeral Committee for the wonderful dinner prepared for our family. The delicious meal was truly appreciated. Also thanks to Pastor Eden for his care during this difficult time.

Lynda Hinkamper & Family

St. John's Lutheran Church in Buckley Illinois will be hosting a CONGREGATION PREPAREDNESS TRAINING led by Pastor Michael Meyer, LCMS Disaster Response, on **Saturday, March 12, 2016 from 8 am to 12 noon**. The **registration fee is \$5** which covers your disaster response training material and other expenses. This training helps the congregation to prepare their facilities and its members should a disaster directly impact their congregation and community. Having recognized that God often uses disaster to open doors for his Church to minister to others, participants address questions like "What are some ways that our congregation can offer Christ's comfort to the community after a disaster?" Since seating is limited to 75, please **RSVP to reserve your place with the church office (217) 394-2444 no later than March 1st**. For further information, contact Ruth Jones, (217) 379-2658.

A Big THANK YOU to all who purchased soup & bread from our LWML Fundraiser! We appreciate your willingness to support us in our endeavors to raise money for mission work! We would also like to thank Thrivent Financial for their generosity with the Action Team funds, which paid for almost all of our expenses. What a blessing that program is to our fundraising efforts! God Bless all of you!

Scrip is a powerful fundraising tool that enables families to raise funds just by ordering gift cards from your church's scrip program to use for their everyday shopping. When they order those gift cards, they'll receive the full value of what they paid, and they'll earn an immediate rebate percentage of what they spent – typically between 3% and 15%, depending on the retailer. Scrip fundraising offers our families a way to contribute more to our church's education mission by shopping smart and using scrip to pay for their household spending. Plus, a scrip program is easier to manage than other fundraisers. Once families get started, they can just keep shopping with scrip all year round and it is so convenient!

ST. JAMES LUTHERAN SCHOOL, QUINCY, IL

217-222-8267

SCHOOL ENROLLMENT has begun at St. James. If you know of anyone who would be interested in a quality Christian school, please let them know about St. James Lutheran School. Principal Landskroener would welcome the opportunity to speak with prospective families.

DID YOU KNOW THAT...

- our PreK made snow in their classroom using baking soda and shaving cream?
- our third grade class participated in the Right to Life of Adams County's annual poster contest?
- our kindergarten – 2nd grade students will see the play *Shrek* at QCT?
- our 6th grade students dissected owl pellets?
- we're getting ready to celebrate the 100th day of school? (Students can dress as if they are 100 years old.)
- we were visited by 18 former students who came together to support a classmate whose father had died? (They attended both the visitation and the funeral of Ted Barnes.) One of them said that they just needed to "come home" to visit St. James. They shared many memories of their time spent here. How truly proud and blessed our school was to have them visit us.

VOLUNTEER OPPORTUNITIES – There are opportunities at St. James for those who wish to get involved with our school and help our students and teachers. Please speak with Principal Landskroener if you may be interested in becoming a volunteer "Eagle" at St. James.

MRS. STRACKELJAHN, our first grade teacher, has officially announced her retirement from teaching at the end of this current school year. She has been a faithful servant for many, many years at St. James and thank her for her unselfish ways in which she served the people at St. James. We wish her and Dale many blessed years to come in their retirement.

Miscellaneous Constant Information

Newsletter Deadline – All newsletter submissions must be sent in **no later than the 20th of each month**. Newsletters must be mailed out on or before the 25th of each month to ensure they are received in time for everyone to use.

Calendar Deadline is also the **20th of the month prior** since it is always enclosed with the Newsletter. If you see an error or need to change a date for an event, please contact the church office. Our weekly calendar is always based on the calendar sent with the newsletter, so please let us know if there are any changes right away.

GREETING CARDS (sponsored by the PLuS group) Be sure to check out the variety of assorted greeting cards. Cards are \$.50.

PLEASE SAVE LABELS - Please continue to save HyVee UPCs, General Mills Box Tops, Campbell's products "point" labels, and Tyson A+ labels. Place them in your child's classroom container or give them to Madeline Hagemann or put them on the white drawer marked "labels" in St. James' narthex or by the secretary's office @ ORLC Thank you!

Drawer Cart by the Office Steps

Top Drawer: Campbell's labels & General Mills box tops for education, HyVee UPCs, & Tyson A+ labels. They benefit the St. James school library. They can't use the Betty Crocker or the Kool-Aid points though. Thanks!

2nd Drawer: For any type used greeting card fronts. Good Samaritan home uses them to make things.

3rd Drawer: For cancelled stamps for missions. They must be complete stamps.



Rada Cutlery is an on-going fundraiser. Rada as a variety of, products: cutlery, stone-ware soy wax candles, and quick mixes. We have started taking orders for our next RADA order. Once we

have \$60 in orders, we will place the order. So, if you don't see some-thing in our many "in stock" items, go ahead and fill out an order form with payment. Please **visit the Rada display in the old chapel. You may leave a completed Rada order form with pay-ment at the scrip table.** Thank you for your support of PLuS!

Church Office Hours are Monday through Friday from 8:30 AM to 5 PM with time out for lunch between 12 and 1. Staff may be in the office before or after these hours, but please call before stopping in so that we can have items ready for you (keys, sermon copies, envelopes, etc.) and can do our best to help you when you arrive.

Concordia Food Bank If anyone is interested in mailing coupons to the Seminary Food Bank, the address is: Concordia Food Bank, 801 Seminary Place, St. Louis, MO 63105.

Attention Parents of College Students:

If your child is away at college, please let the church know their new address and/or email as soon as you get it. We would like to nurture those relationships, pray for them, and help to keep them informed.

Want to Go Paperless?

We would be happy to email you any church correspondence and newsletters if that is the option you prefer. Contact the church office, write your email on the bottom of your attendance card, or email secretary@ourredeemerquincy.org.



Lutheran Child and Family Services of Illinois



Lutheran Child and Family Services of Illinois' professional licensed counselors can help with any problem. They provide individual, couple, marital and family counseling to help address all types of situations. Insurance is accepted. Call 800-363-LCFS (5237) to schedule a FREE confidential initial consultation.

Considering adoption? Lifelink International Adoption (a ministry of Lutheran Child and Family Services of Illinois, LCFS) is seeking families interested in adopting from Korea. We're receiving child referrals again after a temporary break and have a limited number of families on our waiting list. Our South Korean program is one of our most enduring (twenty-nine years) and reliable. Learn more about Lifelink's adoption programs at www.lifelinkadoption.org or contact us at 630-521-8281 or intadopt@lifelinkadoption.org. Lifelink International Adoption is a program of Lutheran Child and Family Services of Illinois.

March Birthdays

1 Donna MacFadden	12 Savannah O'Dell	22 Donald Blattner
3 Matthew Kemp	13 Joshua Weisenburger	22 Tiffany Hines
3 Evie Ott	14 Charles Church	22 Chris Kuhn
3 Richard Schaller	14 Kathy Ragsdale	22 Lauryn Sharrow
4 Jack Tronsgard	14 David Reinburg	23 Clayton Hibbert
6 David Bent	14 Jessica Scharnhorst	24 Anna Ehmen
6 Kara Vahle	14 Mary Tipton	24 Robert Wemhoener
7 Darrell Drescher	17 Thyssen Church	26 Kristin Humphrey
8 Rachel Boerema	17 Ellen Hines	26 Glenna Nicholson
8 Christopher Schnack	17 Mary Morse	26 Richard Reichert
9 Brandon Hufendick	17 Katie Voepel	27 Evita Helm
9 Erin Humphrey	17 Jeffrey Wolfmeyer	27 Jerry Manton
9 Chad Manton	18 Ella Ehmen	27 Mark Voepel
9 Brett Scharnhorst	18 Erin Fischer	28 Eleanor Schlegl
11 Bella Campbell	20 Ciera Clevenger	29 Andrew Fodor
11 Pamela Church	20 Connor Clevenger	30 James Holtman
11 Logan Frink	21 Aaron Boerema	31 Kimberly Spohr
12 Deanna Hibbert	21 Daphnie Robertson	31 Arjee Weisheit
12 Elaine Hyer	22 Michele Austin	

March Baptisms

1 Reva Ehmen	11 Danielle Deeter	23 Layne Bent
1 Brooke Gooding	13 Rob Edwards	23 Daphnie Robertson
1 Maggie Nixon	15 Mandy Creely	24 Isabelle Hillerts
7 Allison Smith	15 Justin Harvey	24 Elise Luker
7 Arjee Weisheit	15 Dave Pellman	24 Jeff Wolfmeyer
8 Becky Lunt	16 Elizabeth Burner	25 Ryne Lubben
8 Jerry Manton	16 Gretchen Kemp	26 Joseph Cleaves
9 Ruth Hall	17 Emily Drescher	27 Matt Weppeler
9 Brandon Hufendick	17 Marty Otto	28 Anthony Blickhan
9 Gary O'Dell	17 Chad Purcell	28 Ella Ehmen
9 Ellen Stockhecke	18 Amy Buss	28 Rod Hibbert
10 Addison Buss	18 Jan Mueller	29 Andrew Fodor
10 Jeremy Holtman	19 Donna Haire	29 Bonnie Hallerberg
10 Josh Holtman	20 Jessica Scharnhorst	31 Henry Hardy
10 Randy Wolfmeyer	21 Phillip Baker	31 Jane Howlett
11 Bella Campbell	22 Sophia Brown	31 Bill Schanbacher
11 Emma Campbell	22 Jane Voepel	

March Anniversary

28 Allen & Missy Ebel



Assignments for March 2016

Communion Assistants:

Saturday, March 5 at 5:00 p.m.	Dennis Go	
Sunday, March 6 at 9:00 a.m.	Steve Schoch	Randy Wolfmeyer
Saturday, March 12 at 5:00 p.m.	Dennis Go	
Sunday, March 13 at 9:00 a.m.	Larry Foster	Jerry Lunt
Saturday, March 19 at 5:00 p.m.	Dennis Go	
Sunday, March 20 at 8:00 a.m.	Steve Kaiser	Joe Cleaves
Sunday, March 20 at 10:15 p.m.	VOLUNTEERS NEEDED	VOLUNTEERS NEEDED
Maundy Thursday, March 24 at 7 PM	Larry Foster	Stan Yelton
Saturday, March 26 at 5:00 p.m.	Dennis Go	
Sunday, March 27 at 6:30 a.m.	Gary Hyer	Larry Ehmen
Sunday, March 27 at 9:00 a.m.	Brad Ehmen	Brad Essington

Ushers:

Saturdays at 5:00 PM	Gary McElfresh
Sun. March 6, 13, 27 9:00AM	Jeff Smith, Darrell Drescher, Gary Cramlett, Bill & Alex Schlipman
Palm Sun. Mar. 20, at 8 AM	VOLUNTEERS NEEDED
Palm Sun. Mar. 20 at 10:15 AM	VOLUNTEERS NEEDED
Easter Sun. Mar. 27 at 6:30 AM	VOLUNTEERS NEEDED
Lent 3, Wed., Mar. 2, 7 PM	Darrell Drescher, Steve Hyer, Brad Essington, Stan Yelton
Lent 4, Wed., Mar. 9, 7 PM	Chris & Michele Clevenger, Larry & Monica Foster
Lent 5, Wed., Mar. 16, 7 PM	Nathan Hoebing, Chris Knapp, Sonny Voepel, Joe Cleaves
Maundy Thurs., Mar. 24, 7 PM	Brad Ehmen, Jerry Manton, Clint & Craig Gooding
Good Friday, Mar. 25, 7 PM	Gary McElfresh, Joe Cleaves, Mike & Allan Murphy

Registration Slips: Ruth Essington

Altar Care: Kriss Fink, Kari Foulk, Carolyn Cramlett, Amy Killday

Counters: Mary Lazzeri and Barb Ellerbrock

Drivers: Steve Hyer, Jerry Manton, Wanda Spohr, Ruth Hall, Ryan Vaughn

If you wish to help in one of these areas, please contact the church office at 217-223-1769 or by email at Secretary@OurRedeemerQuincy.org

Pastoral Report

(January 1 – January 31, 2016)

Official Acts

Infant Baptisms
First Communion
Adult Confirmation
Youth Confirmations
Marriages
Funerals

Doreetha Ruth Elliott – January 18, 2016
Theodore I. “Teddy” Barnes – January 21, 2016

Membership Changes

Gains [+0B, +0C]

Infant Baptisms [+0B, +0C]

Adult Confirmations [+0B, +0C]

Youth Confirmations [+0B, +0C]

Transfers In [+0B, +0C]

Profession of Faith (from other Lutheran) [+0B, +0C]

Losses [-3B, -3C]

Death [-1B, -1C]

Doreetha Ruth Elliott – January 13, 2016

Transfers Out [-0B, -0C]

Requested Removal [-2B, -2C]

Katie Thomure – January 23, 2016
Jerry Thomure – January 23, 2016 (non-member)
Pat Griffin – January 26, 2016

Statistical Adjustment [+/-0B, +/-0C]

Membership	January 1, 2016	Gains	Losses	January 31, 2016
Baptized	575	+0	-3	572
Confirmed	440	+0	-3	437

2015 Profit & Loss Budget vs. Actual

Income	<u>Jan - Dec 15</u>	<u>Budget</u>	<u>\$ Over Budget</u>	<u>% of Budget</u>
001 · 001 General Offerings	267,794.85	294,000.00	-26,205.15	91.1%
002 · 002 Together in Mission	6,590.00	7,732.00	-1,142.00	85.2%
003 · 003 Loose Plate	6,785.40	6,000.00	785.40	113.1%
005 · Special	21,666.20	4,500.00	17,166.20	481.5%
008 · 008 PLuS Fund-Raising	3,000.00	3,000.00	0.00	100.0%
009 · 009 Building Fund Interest	138.59	0.00	138.59	100.0%
010 · Annuity Interest Income	601.68	0.00	601.68	100.0%
011 · 011 General Fund Interest	9.53	50.00	-40.47	-19.1%
012 · 012 Endowment Fund Interest	413.26	0.00	413.26	100.0%
013 · 013 Kleinsorge MMK Income Inter	712.90	0.00	712.90	100.0%
014 · 014 Building Fund Money Market	465.00	0.00	465.00	100.0%
015 · 015 Kleinsorge Bequest Interest	0.00	0.00	0.00	0.0%
016 · 016 Memorial Fund Interest	337.95	0.00	337.95	100.0%
017 · 017 Memorial Fund Money Market	8,606.00	0.00	8,606.00	100.0%
018 · 018 St. James Tuition	0.00	0.00	0.00	0.0%
019 · 019 ORLC Scrip Fund	<u>7,000.00</u>	<u>7,000.00</u>	<u>0.00</u>	<u>100.0%</u>
Total Income	324,121.36	322,282.00	1,839.36	06.0%
Expense				
Mission	25,426.57	24,732.00	694.57	102.8%
Personnel	178,277.02	181,749.00	-3,471.98	98.1%
Program	144,700.56	133,881.00	10,819.56	108.1%
Property	30,641.97	34,366.00	-3,724.03	89.2%
500 · Special Expenses	3,109.27	0.00	3,109.27	100.0%
600 · BUILDING FUND EXPENSE	<u>107,184.63</u>	<u>0.00</u>	<u>107,184.63</u>	<u>100.0%</u>
Total Expense	489,340.02	374,728.00	114,612.02	130.6%
Net Income	-165,218.66	-52,446.00	-112,772.66	315.0%

January 2016 Profit & Loss Budget vs. Actual

Income	<u>Jan 16</u>	<u>Budget</u>	<u>\$ Over Budget</u>	<u>% of Budget</u>
001 · 001 General Offerings	20,579.00	24,500.00	-3,921.00	84.0%
002 · 002 Together in Mission	515.00	644.34	-129.34	79.9%
003 · 003 Loose Plate	130.04	500.00	-369.96	26.0%
008 · 008 PLuS Fund-Raising	0.00	250.00	-250.00	0.0%
011 · 011 General Fund Interest	0.32	4.16	-3.84	7.7%
019 · 019 ORLC Scrip Fund	<u>0.00</u>	<u>583.34</u>	<u>-583.34</u>	<u>0.0%</u>
Total Income	21,635.85	26,481.84	-4,845.99	81.7%
Expense				
Mission	1,000.00	2,061.00	-1,061.00	48.5%
Personnel	15,282.58	15,371.34	-88.76	99.4%
Program	1,917.57	11,539.70	-9,622.13	16.6%
Property	<u>1,836.47</u>	<u>2,897.48</u>	<u>-1,061.01</u>	<u>63.4%</u>
Total Expense	20,435.33	31,869.52	-11,434.19	64.1%
Net Income	1,200.52	-5,387.68	6,588.20	-22.3%

PUZZLE PAGE

GETTING ALONG

by

Bill Schlegl

How does the Bible tell us to get along with one another?
Write the letter that comes between the two letters given.

HJ EG

HJ SU

AC DF

OQ NP RT RT HJ AC KM DF

ZB RT

LN TV BD GI

ZB RT

KM HJ DF SU GI

HJ MO

XZ NP TV

KM HJ UW DF

OQ DF ZB BD DF ZB AC KM XZ

VX HJ SU GI

ZB KM KM

LN DF MO

(Answer found on Page 2)

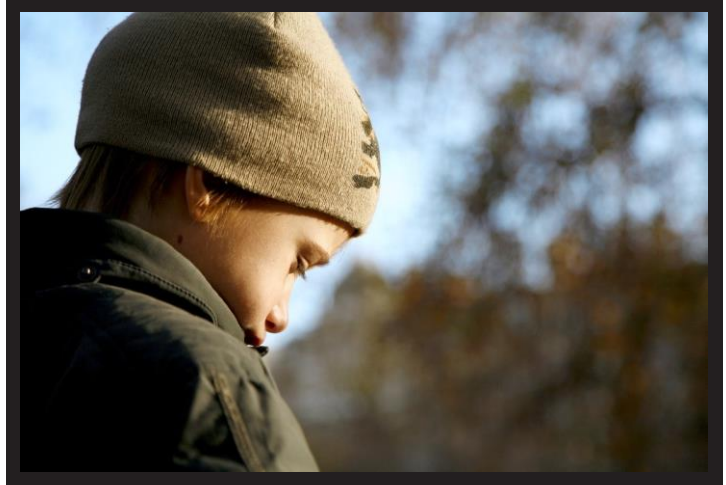


LCFS Clinical Services

Keep kids Safe

March 2016

When a person is intentionally cruel to someone weaker, it is called bullying. Anyone can be the target of a bully, but children are particularly vulnerable. Bullying is aggressiveness, that if allowed to continue, can destroy relationships, abilities and spirits. How can parents, families and young people cope with bullying in daily living? Bullying begins with teasing, name-calling criticism and jokes made at the expense of another person. Unfortunately, it has become commonplace and continues because it can. When bullying is encouraged, supported or ignored it becomes painful and harmful to the target. Bullying is about a lowered sense of self, coupled with low expectations. Adults can be leaders in raising personal-relationship requirements. They can set the tone in conversation and model appropriate behavior. Some special tips to keep kids safe would include the following recommendations. If you encounter a bully:



1. Don't fight back
2. Calmly say stop and walk away
3. Tell a trusted adult (parent, teacher, friend or coach)
4. Write down or draw what happened
5. Create a signal or code to use to let someone you trust know you have been the target of cruel behavior

You and your family do not have to struggle alone. LCFS counselors help families generate hope and cope with life's challenges. Most insurance plans accepted; sliding-scale fees are available on a case-by-case basis. For more information or to schedule an appointment, contact us at lcfs_info@lcfs.org or 800-363-LCFS (5237).

Discover LCFS and the services we offer at www.lcfs.org and www.facebook.com/LCFSIL.

LCFS offers counseling at the following locations:

Northern Illinois

Crown Point at Immanuel Lutheran Church, Belvidere
Grace Lutheran School, River Forest

Central Illinois

Trinity Lutheran School, Bloomington
LCFS office, Decatur
Christ Lutheran Church, Normal
LCFS office, Springfield

Southern Illinois LCFS

office, Belleville LCFS
office, Mt. Vernon LCFS
office, Sparta

**To schedule a first-time appointment,
call 800-363-LCFS (5237) or
visit www.lcfs.org for additional information.**



Easter Lilies

For Easter, we are planning to order Easter lilies for the chancel. You may help underwrite the cost of these lilies with a special donation. The lilies may be "sponsored" as a memorial to a loved one, as a thank-offering for God's blessings, or as a gift to the glory of God and the beauty of his house. A listing of those who have sponsored these lilies will be included in the bulletins for Easter.

The lilies will be available at a cost of **\$7.00** each. You will be able to take your lily or lilies home after the conclusion of the 9:00 AM service on Easter. If you would like to sponsor one or more Easter lilies, please fill out the form below and give it to one of the ushers, or bring or mail it to the church office.

All orders must be received at the church office on or before Sunday, March 20, 2016.

Please include payment with your order.

I would like to sponsor _____ Easter lily (lilies).

The lily is (lilies are) given:

☐ in loving memory of _____

☐ in thanksgiving for blessings received

☐ to the glory of God and the beauty of his house

Name: _____

(Please bring or mail this completed form with your payment to the church office.)